

MPL Series

Application

Installed inside wood or metal doors to provide 3-way multi-bolt locking

Operation

- 360°/720° key rotation for deadbolt action
- Additional travel for latch action
- Left- or right-hand application

Options

- EN grade 3 hardware
- EN grade 4 hardware
- Fixed outside handle
- MPL210 - central lock case for steel door
- MPL211 - central lock case for wooden door

Materials

Case and mechanism: steel

Bolts: steel

Cylinder protector: hardened steel

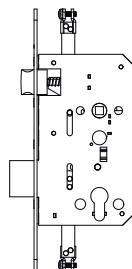
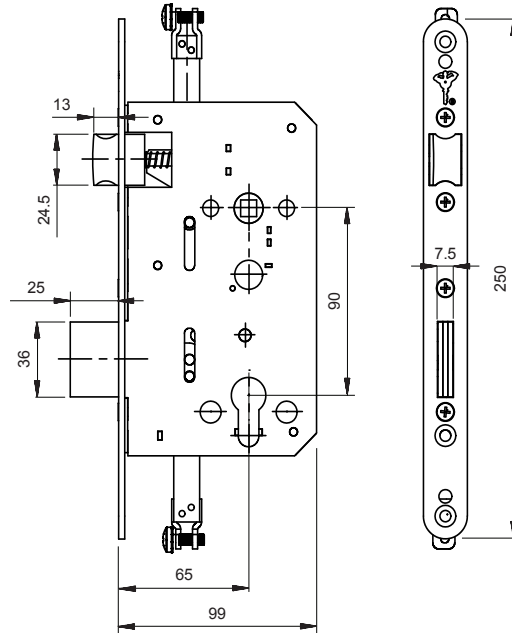
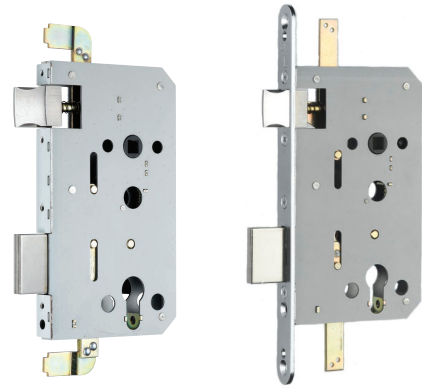
Additional features

- Lock case size 99 mm
- Square deadbolt
- Triple round deadbolts for steel and wooden doors
- Standard hardware (CC=90 mm)

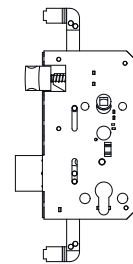
Standard

EN12209

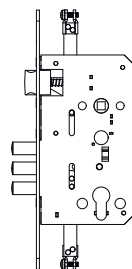
Note: for maximum security it is recommended to use Mul-T-Lock High Security escutcheons (EN grade 3 and 4)



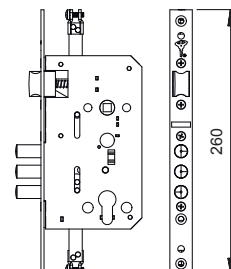
MPL 210 - P/N 26900047



MPL 211 - P/N 26900048



MPL 212 - P/N 26900251



MPL 212 - P/N 26900254



www.mul-t-lock.com